

## Blackpool Victoria Hospital Emergency Department

### Monthly Bulletin: October 2010 to September 2011

This bulletin provides a breakdown of all attendances<sup>1</sup> at Blackpool Victoria Hospital Emergency Department (ED) between October 2010 and September 2011.

Between October 2010 and September 2011 there were 78,959 attendances to Blackpool Victoria Hospital ED. The month with the highest attendances was July with 6,943 attendances (**Figure 1**). There were more male than female attendances presenting at Blackpool Victoria Hospital ED (males=40,765; 52%).

**Figure 2** illustrates age group of ED attendances for each month. Over three in ten of ED attendances were aged over 60 years old (n=25,185; 32%) and 30-59 years old (n=24,432; 31%). Most ED attendances were self-referred (44%) or referred by an emergency call or ambulance (42%) (**Table 1**).

**Table 2** details the injury group of ED attendances. The majority (89%) of attendances were recorded as other (including other injury and medical attendances). Sports injury accounted for 3% of attendances, assaults 3% and road traffic collisions (RTC) 2%.

**Table 3** shows the location of incident for ED attendances. It shows that six in ten (60%) of incidents occurred in the home, and a fifth (20%) occurred in a public place.

The discharge destination for ED attendances is displayed in **Table 4**. It indicates that over half (54%) of attendances were discharged. Almost three in ten (28%) of attendances were admitted into hospital and 11% were referred.

#### Assault attendances

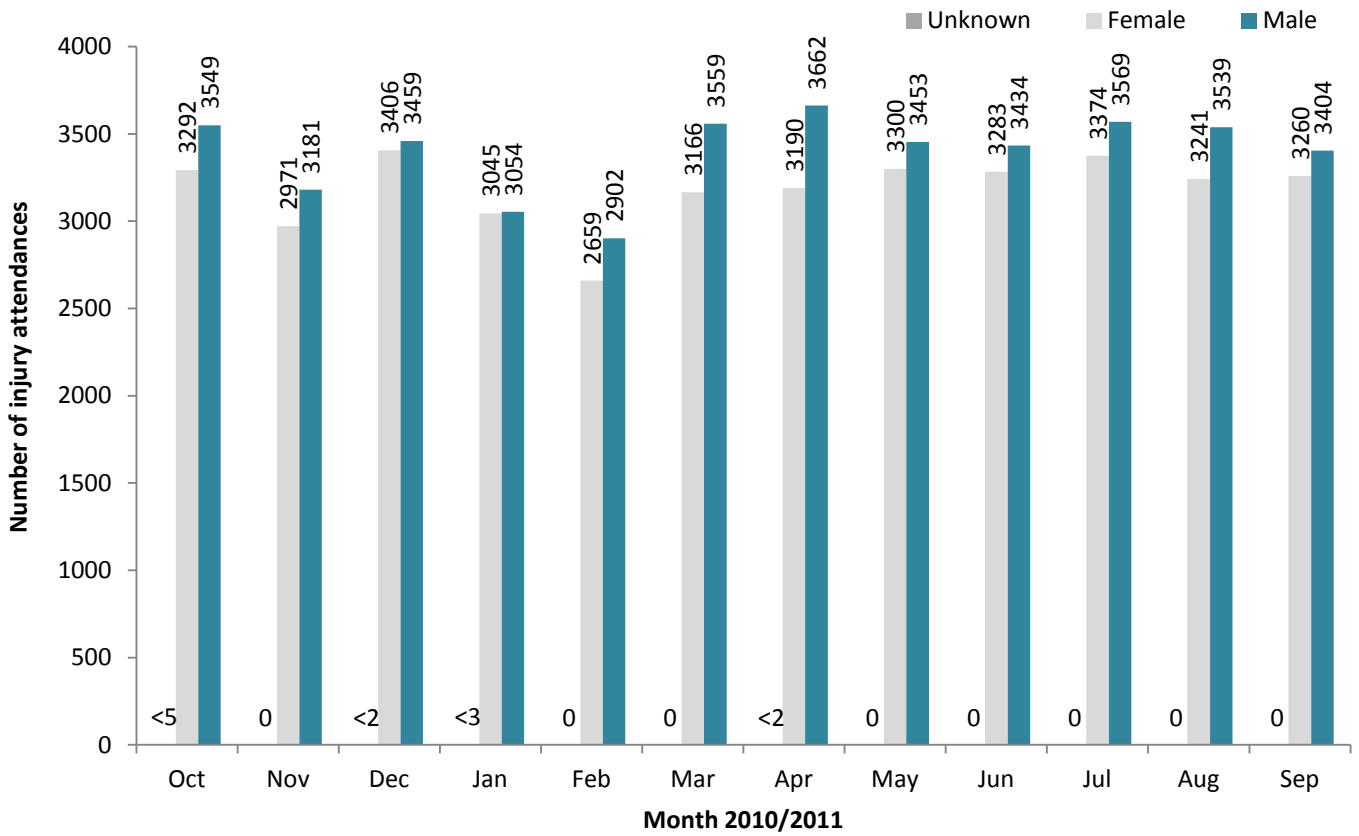
Between October 2010 and September 2011 there were 2,199 assault attendances to Blackpool Victoria Hospital ED. The month with the highest attendances was April with 222 attendances (**Figure 3**). There were more male than female assault attendances presenting at Blackpool Victoria Hospital ED (males=1,602; 73%).

**Table 5** details the age group of assault attendances for each month. The majority of ED assault attendances were aged 15-29 (n=1,194; 54%) and 38% were 30-59 years old (n=840).

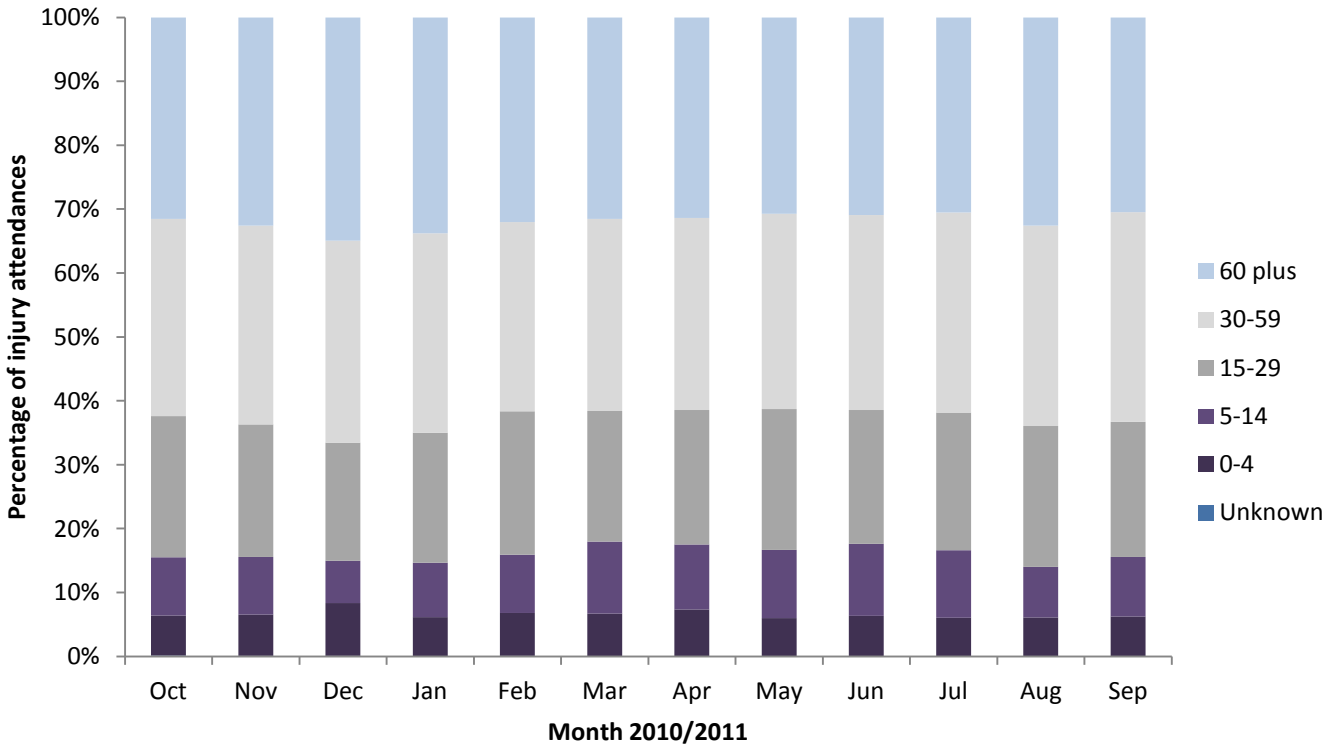
**Table 6** shows the location of incident for assault attendances. It shows just under half (46%) occurred in a public place, with over a quarter (27%) occurring in the home.

**Table 7** illustrates the discharge destination for assault attendances to Blackpool Victoria Hospital ED. Over six in ten (62%) were discharged without follow-up treatment, whilst 16% required follow-up treatment. Over one in twenty (6%) assault attendances were admitted to hospital.

**Figure 1: Gender of ED attendances by month, October 2010 to September 2011**



**Figure 2: Age group of ED attendances by month, October 2010 to September 2011**



**Table 1: ED attendances by source of referral and month, October 2010 to September 2011<sup>2345</sup>**

Source of referral	Oct	Nov	Dec	Jan	Feb	Mar	Apr	May	Jun	Jul	Aug	Sep	Total	%
Self-referral	2821	2606	2889	2594	2368	3074	3052	3082	3044	3170	2879	2802	34381	44
Emergency call/ambulance	2831	2576	3009	2611	2407	2722	2945	2747	2857	2875	2910	2849	33339	42
Health care provider: same or other	***	***	***	632	527	574	659	686	564	661	761	733	5797	7
GP	227	183	232	154	163	227	138	169	185	163	176	196	2213	3
Other referrer	161	383	711	15	6	19	***	***	***	***	***	***	1295	2
FCMS	340	180	***	***	***	***	***	***	***	***	***	***	520	1
Employer	91	22	***	50	55	53	31	<27	34	37	53	39	491	1
Educational establishment	17	25	16	38	33	48	28	43	33	37	***	45	364	0
Walk-in centre	181	92	***	***	***	***	***	***	***	***	***	***	273	0
Police	47	25	7	***	***	7	***	***	***	***	***	***	91	0
Other hospital	42	17	***	***	***	***	***	***	***	***	***	***	59	0
NHS Direct	37	19	***	***	***	***	***	***	***	***	***	***	56	0
ED staff	32	17	***	***	***	***	***	***	***	***	***	***	54	0
LA/social services	***	5	***	***	***	***	***	***	***	***	***	***	11	0
Optician	9	***	***	***	***	***	***	***	***	***	***	***	10	0
Prison service	***	***	***	***	***	***	***	***	***	***	***	***	5	0
<b>Total</b>	<b>6844</b>	<b>6152</b>	<b>6866</b>	<b>6101</b>	<b>5561</b>	<b>6725</b>	<b>6853</b>	<b>6753</b>	<b>6717</b>	<b>6943</b>	<b>6780</b>	<b>6664</b>	<b>78959</b>	<b>100</b>

**Table 2: ED attendances by injury group and month, October 2010 to September 2011<sup>6\*</sup>**

Patient group	Oct	Nov	Dec	Jan	Feb	Mar	Apr	May	Jun	Jul	Aug	Sep	Total	%
Other injury	6035	5384	6293	5487	4890	5858	6072	6014	5981	6255	6080	5898	71307	89
Sports injury	258	217	70	171	192	308	224	238	204	182	169	252	2485	3
Assault	177	147	177	165	173	196	222	203	179	190	198	172	2199	3
RTC	182	216	172	107	134	154	137	137	162	120	162	137	1820	2
Overdose	152	154	118	136	140	169	151	136	150	158	138	175	1758	2
Deliberate self-harm	40	34	36	35	32	40	47	25	41	38	33	30	461	1
<b>Total</b>	<b>6844</b>	<b>6152</b>	<b>6866</b>	<b>6101</b>	<b>5561</b>	<b>6725</b>	<b>6853</b>	<b>6753</b>	<b>6717</b>	<b>6943</b>	<b>6780</b>	<b>6664</b>	<b>80030</b>	<b>100</b>

\* In December 2010, the overdose injury group was removed due to a change in the ED's IT system. Since this time, cases have been categorised into one of the other injury groupings (e.g. 'other injury' / 'deliberate self-harm'). Such cases are however identifiable via another data field, 'presenting complaint'. Where injury group is recorded as 'other injury' and 'presenting complaint' is recorded as overdose/poisoning these cases have been categorised in this table as overdose/poisoning. Please note, during this period, 48 DSH cases also had overdose/poisoning recorded as their presenting complaint.

**Table 3: ED attendances by location of incident and month, October 2010 to September 2011**

Location	Oct	Nov	Dec	Jan	Feb	Mar	Apr	May	Jun	Jul	Aug	Sep	Total	%
Home	3899	3695	4373	4071	3492	4115	4084	3898	3861	3877	3991	3894	47250	60
Public place	1335	1139	1338	921	949	1181	1406	1319	1406	1534	1622	1335	15485	20
Other	1082	804	770	679	687	825	990	1041	1023	1084	856	966	10807	14
Workplace	304	256	240	226	242	287	254	289	256	294	294	264	3206	4
Educational establishment	191	242	143	204	191	317	119	206	171	154	17	205	2160	3
Unknown	33	16	***	0	0	0	0	0	0	0	0	0	51	0
<b>Total</b>	<b>6844</b>	<b>6152</b>	<b>6866</b>	<b>6101</b>	<b>5561</b>	<b>6725</b>	<b>6853</b>	<b>6753</b>	<b>6717</b>	<b>6943</b>	<b>6780</b>	<b>6664</b>	<b>78959</b>	<b>100</b>

**Table 4: ED attendances by discharge destination and month, December 2010 to September 2011<sup>7\*\*</sup>**

Discharge destination	Dec	Jan	Feb	Mar	Apr	May	Jun	Jul	Aug	Sep	Total	%
Discharged	3621	3269	2941	3730	3851	3692	3659	3925	3715	3691	36094	55
Admitted	2129	1764	1628	1750	1739	1809	1762	1685	1765	1756	17787	27
Referred	625	606	583	772	752	720	754	788	689	664	6953	11
Incomplete treatment	0	350	312	357	399	392	423	418	466	431	3548	5
Other	401	20	27	29	29	69	29	22	50	32	708	1
Transferred	73	72	58	70	70	48	72	82	71	64	680	1
Died	17	20	12	17	13	23	18	23	24	26	193	0
<b>Total</b>	<b>6866</b>	<b>6101</b>	<b>5561</b>	<b>6725</b>	<b>6853</b>	<b>6753</b>	<b>6717</b>	<b>6943</b>	<b>6780</b>	<b>6664</b>	<b>65963</b>	<b>100</b>

\*\*Due to a change in the ED's IT system the coding for the discharge destination field has been updated. This report uses the new coding fields in use since December 2010.

## Assaults

Figure 3: Number of ED assault attendances by gender and month, October 2010 to September 2011

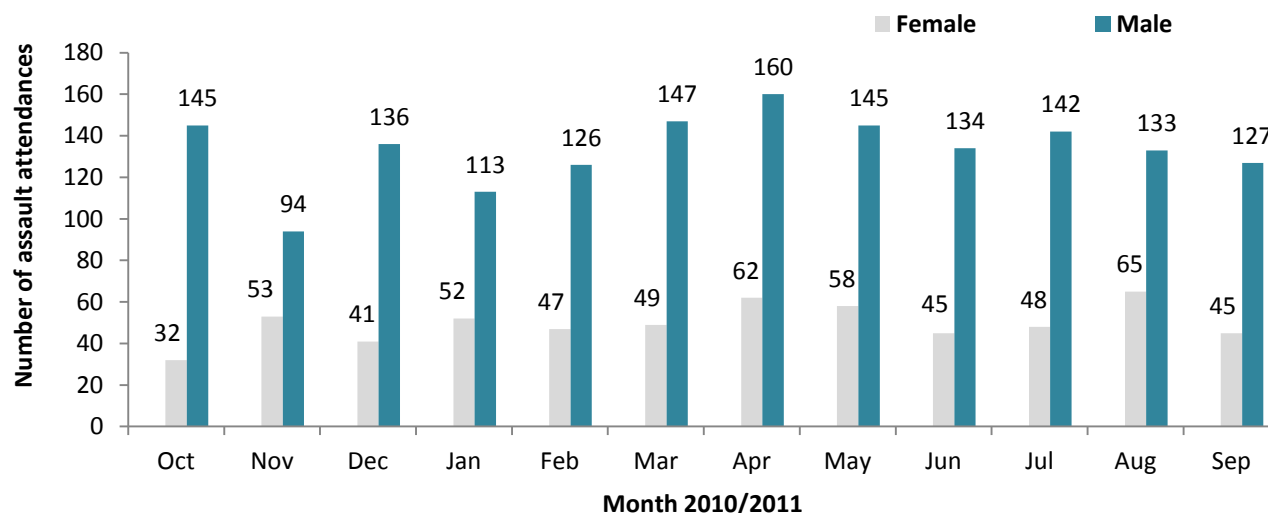


Table 5: ED assault attendances by age group and month, October 2010 to September 2011

Age group	Oct	Nov	Dec	Jan	Feb	Mar	Apr	May	Jun	Jul	Aug	Sep	Total	%
Unknown	***	***	***	***	***	***	***	***	***	***	***	***	***	0
0-4	***	***	***	***	***	***	***	***	***	***	***	***	<8	0
5-14	12	6	***	7	6	11	8	13	14	10	8	<6	102	5
15-29	92	68	91	93	101	101	125	112	111	101	113	86	1194	54
30-59	70	67	78	56	62	78	83	75	50	73	71	77	840	38
60 plus	***	6	5	9	***	6	6	***	***	6	***	***	55	3
Total	177	147	177	165	173	196	222	203	179	190	198	172	2199	100

Table 6: ED assault attendances by location of incident and month, October 2010 to September 2011

Location	Oct	Nov	Dec	Jan	Feb	Mar	Apr	May	Jun	Jul	Aug	Sep	Total	%
Public place	90	53	84	66	80	83	103	112	72	96	95	84	1018	46
Home	39	45	57	60	44	59	56	39	40	49	56	45	589	27
Other	39	39	28	25	42	41	47	37	56	35	39	36	464	21
Workplace	<6	***	<6	<11	<7	<10	<14	7	***	<8	<9	<7	84	4
Educational establishment	***	<7	***	***	***	***	***	8	<8	***	***	***	44	2
Total	177	147	177	165	173	196	222	203	179	190	198	172	2199	100

Table 7: ED assault attendances by discharge destination and month, October 2010 to September 2011

Discharge destination	Oct	Nov	Dec	Jan	Feb	Mar	Apr	May	Jun	Jul	Aug	Sep	Total	%
Discharged	96	91	105	109	118	109	145	134	110	120	127	99	1363	62
Other	18	20	35	27	25	33	28	39	37	30	34	32	358	16
Follow-up	56	25	25	22	23	37	36	25	16	26	28	31	350	16
Admitted	7	11	12	7	7	17	13	5	16	14	9	10	128	6
Total	177	147	177	165	173	196	222	203	179	190	198	172	2199	100

Published December 2011  
 Johnathan Rooney (TIIG Officer)  
 Centre for Public Health, Liverpool John Moores University, 2nd Floor, Henry Cotton Campus, Liverpool, L3 2ET  
 Tel: 0151 231 4513 Email: j.rooney@ljmu.ac.uk  
 Website: [www.tiig.info](http://www.tiig.info) (please note data requests should be made through the website)

<sup>1</sup>For other EDs, TIIG reports on injuries only. However, this report includes all attendances at Blackpool Victoria Hospital ED. This is due to the medical and injury attendances being categorised within the patient group 'other'.

<sup>2</sup>GP=general practitioner, LA=local authority and FCMS=Fylde Coast Medical Services Ltd

<sup>3</sup>Please note that all numbers less than five have been suppressed (with \*\*\*) in line with patient confidentiality; and if there is only one number less than five in a category then two numbers will be suppressed to prevent back calculations from totals.

<sup>4</sup>Please note percentages might not add to one hundred due to rounding.

<sup>5</sup>The decrease in figures for November and December for some fields is due to a change in IT system at Blackpool Victoria Hospital ED. This has led to certain fields being no longer collected.

<sup>6</sup>Due to low numbers firework injuries (n=16) have been included under other injury.

<sup>7</sup>For previous months please refer to 'January to December 2010' monthly bulletin report available at [www.tiig.info](http://www.tiig.info).